

Alan R. Moon's and Bruno Faidutti's

INCAN GOLD

(c) Sunriver Games LLC 2006

IDEA OF THE GAME

The players of *Incan Gold* are adventurers who have chosen to explore an Incan temple rumored to contain many treasures: turquoise, obsidian and, if you're lucky, pieces of gold. Of course, the temple is said to be full of dangers too, so getting away with the loot is not going to be easy. The player who knows when enough has been gained and still gets out safely will be the ultimate winner.

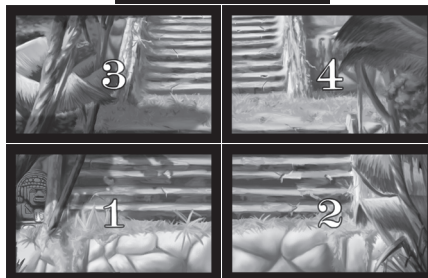
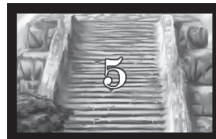
COMPONENTS

- + 5 Temple cards to make the game board
- + 16 Player cards (8 Torch cards and 8 Camp cards)
- + 8 Tent cards, scored to fold in half easily
- + 30 Quest cards, 15 Treasure cards and 15 Hazard cards (3 each of 5 hazards)
- + 5 Artifact cards
- + 110 Treasures: 60 turquoise (value of 1) 30 obsidian (value of 5) and 20 gold (value of 10)

PREPARATIONS

Each player takes a set of 2 Player cards (Torch card and Camp card) and a Tent. The Tent is folded and placed in front of the player (see page 4).

The Temple (5 cards) is created in the center of the table as shown. The 5 Artifact cards are shuffled placed face down, one under each of the Temple cards.



The Treasures are placed near the Temple.

The Start player is the person who last held a real piece of gold.

PLAYING THE GAME

The game is played in five rounds. The player with the most wealth (in treasure value) after the fifth round wins.

A GAME ROUND

As the Start player, you mark the beginning of the round by turning over the corresponding Temple card, starting with the card marked "1."

You show the Artifact that is rumored to be in this part of Temple to all players, and shuffle it into the Quest cards to make the Quest deck for this round. If an Artifact is not discovered in its disclosure round, it may be found later in the game!

A game round consists of a variable number of turns. Each turn plays as follows:

1) Players Choices. Players still in the Temple decide if they are going to leave or not.

- Each player secretly chooses their Torch card if they are going farther into the Temple, or their Camp card if they are leaving the Temple to return to camp.
- The Start player says “GO” and everyone reveals the chosen card at the same time and places it on the table face up.



Torch card

Note: As the first Quest card is turned, there’s no reason to leave so you may skip this step and assume all players enter the Temple.

2) Players Who Continue Into the Temple. The Start player turns the top card from the Quest deck face up, and places it next to the last card drawn, making a pathway of cards (on the first turn, place the card next to the Temple). It can be helpful to lay Hazard cards at right angles to Treasure cards to make them easier to identify.

- If the card shows a Treasure (numbered card, blue border), the players have found some treasure. The

treasure value on the card is divided among these players, rounded down. For example, if there are four players still in the Temple, and the treasure value is 11, each player receives 2 treasures (2 turquoise stones). These treasures are placed beside the players’ Tents, not inside.



- Artifacts. If the card shows an Artifact (gold border), the Artifact stays on the path. It’s worth extra points at the end of the game, but only to a person clever enough to get it safely back to camp!
- If the card shows a red bordered Hazard, one of two situations will happen:
 1. If no other Hazard of the same type has been previously revealed, nothing happens. The players have had a glimpse of danger and doom! Note: If this is the first Quest card turned, since no one has reason to leave, you may immediately flip the next card from the Quest deck face up.
 2. If this is the second Hazard card of the same type, the players have been scared away from



the Temple and the round is over. All players still in the Temple give back all the treasures they took during the round (the Treasures placed beside their Tents). This second Hazard card will be removed from the game.

If the round is not over, the players who stayed in the Temple now take their 2 Player cards back in hand and return to 1) *Player Choices* on page 2. The Start player remains the same until all players leave or are driven from the Temple.

3) **Players Who Leave.** If one or more players choose to leave the Temple:

- They equally divide all the treasures that have been left on any Quest cards in the path for this round. If the number of treasures cannot be divided equally, the extra treasures are left on any Quest card (which Quest card does not matter).
- They return to camp and place all the treasures they received during this round inside their Tent. These treasures are safe, and may not be lost.
- **Artifacts.** If more than one player leaves, no one gets Artifacts! If one and only one player leaves the Temple at this time, that player may pick up all Artifacts that are on the path. Artifacts are left beside the player's Camp tent where they are safe. The first three Artifacts to leave the Temple are worth 5 points each. As a reminder of this, place



an obsidian stone on those Artifact cards. Any further Artifacts that leave the Temple are worth 10 points and should be noted with a gold stone.

- Players that left the Temple leave their Camp card face up, and take no part in play for the rest of this round.

Note: All players are allowed to see their opponents' Tents, but not to touch or count what is inside.

4) End Of A Round

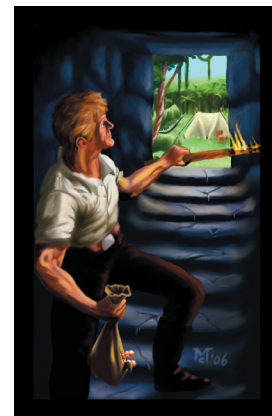
A round can end in two ways:

When all players have left the Temple, or when the second Hazard card of the same type is drawn, scaring everyone away.

If the round ends because a second Hazard card is drawn, this second Hazard card is removed from the game and placed beneath the Temple card representing that round before shuffling the deck for the next round.

If there were any Artifacts on the path when the round ends, these treasures are lost forever and removed from the game. Bad luck for the expedition!

When a round is over, the Start player passes all the Quest cards to the person to the left, and that player becomes the new Start player. A new round is started using the same rules above.



Camp card

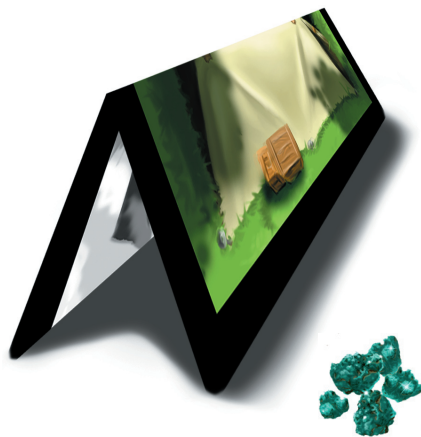
END OF THE GAME

The game is played in five rounds. After the final round, the Tents are opened and players count their treasures.

Treasures are valued as follows:

- Turquoise – 1
- Obsidian – 5
- Gold – 10
- Artifacts – 5 and 10

The player with the most wealth (in treasure value) wins. If scores are tied, the player with the most Artifacts wins. If still tied, play again!



NOTES

Artifacts are new to this edition of the game. To play the original Diamant rules, simply remove the Artifacts from the game. Everything else stays the same.

CREDITS

Incan Gold is a game by Alan R. Moon and Bruno Faidutti.

Graphics and layout: Matthias Catrein, Rita Humphrey, KC Humphrey

Development for Sunriver Games: KC Humphrey

Sunriver Games and Funagain Games thank our playtesters: Jim & Jill Ginn and family, Doug & Mimi Walker, Carey & Linda Grayson, Jeff DeBoer and the Funagain staff, the Brooks family, the Humphrey family, Jordon Orser and the dedicated members of RipCity Gamers.

Bruno Faidutti thanks his original playtesters, too numerous to be all listed here. Special thanks to all the regulars at Marc Laumonnier's gaming sessions (Tchao, The troll, Kefta le Belge, Rémy and others), and to all the attendants at the 16th ludopathic Gathering and at the pirates MLM.

Alan R. Moon thanks his original playtesters, meaning Phil Alberg, Dave & Jenn Bernazzani, Pitt Crandlemire, Terry Egan, Matt Horn, Craig Massey, Janet Moon, Berhard Petschina, Mike Schloth, Eric Schultz, Scott Simon, Adam Smiles, Tony Soltis, Richard Spoons, and Rick Thornquist.

